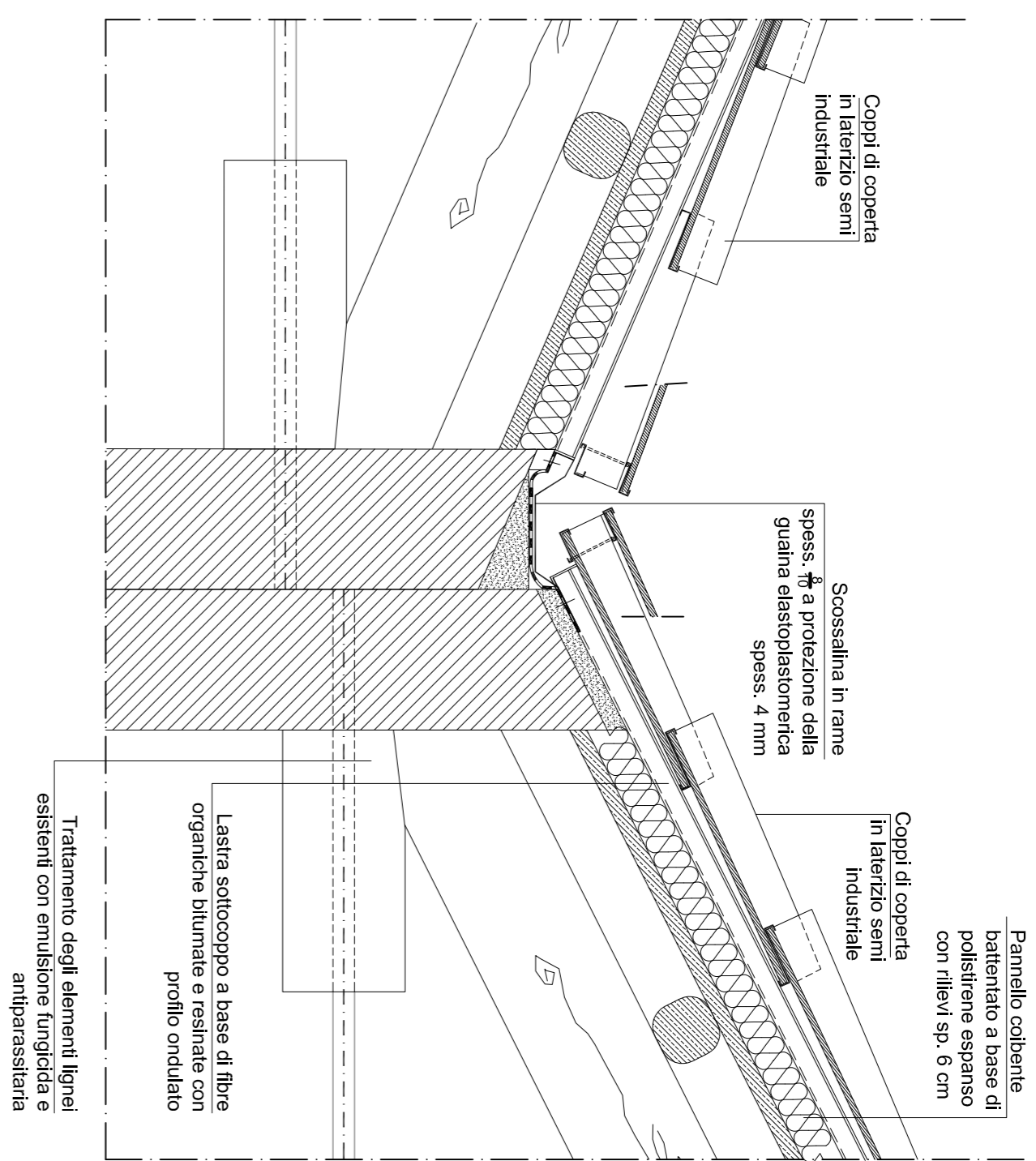
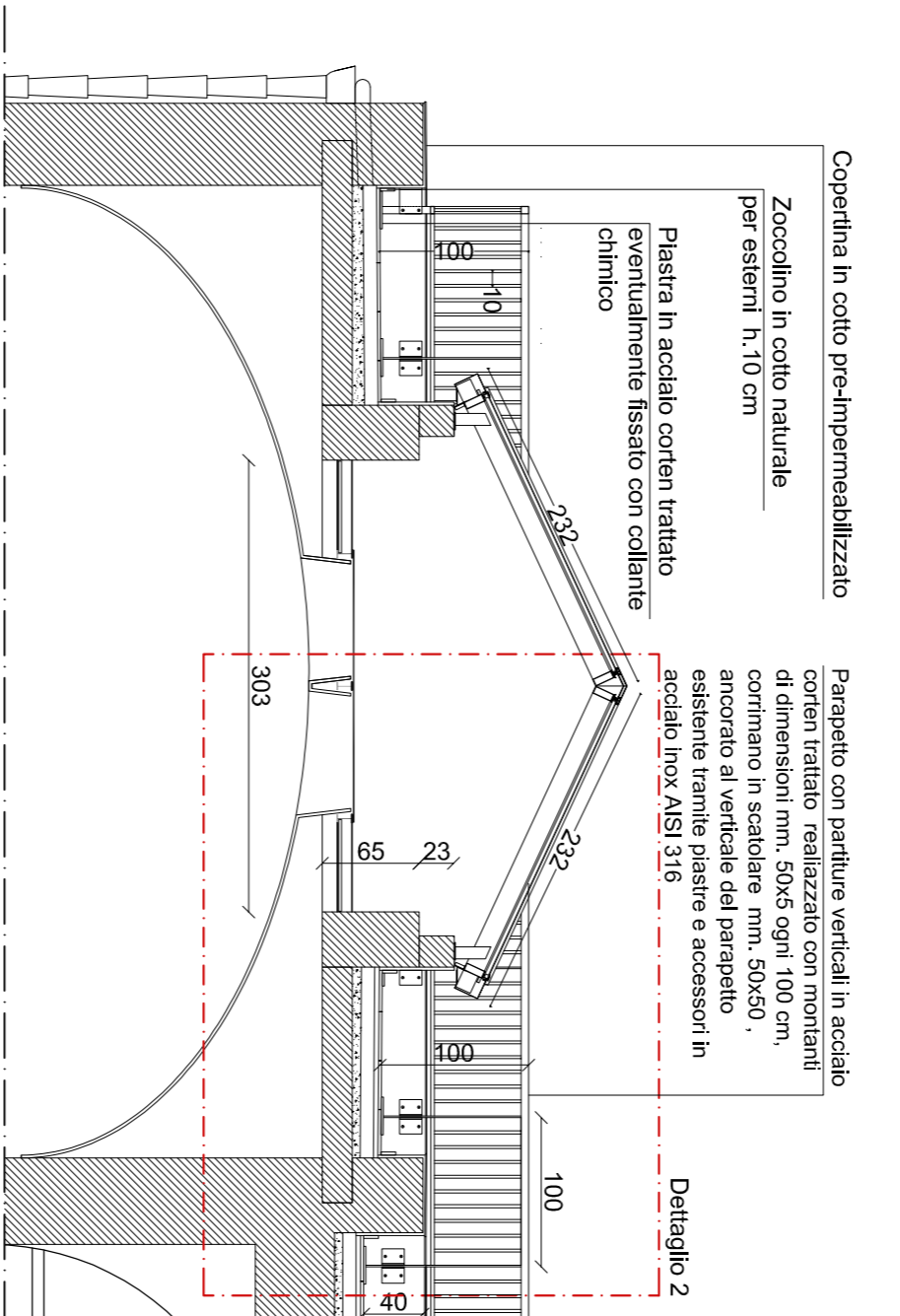


SEZIONE C-C'



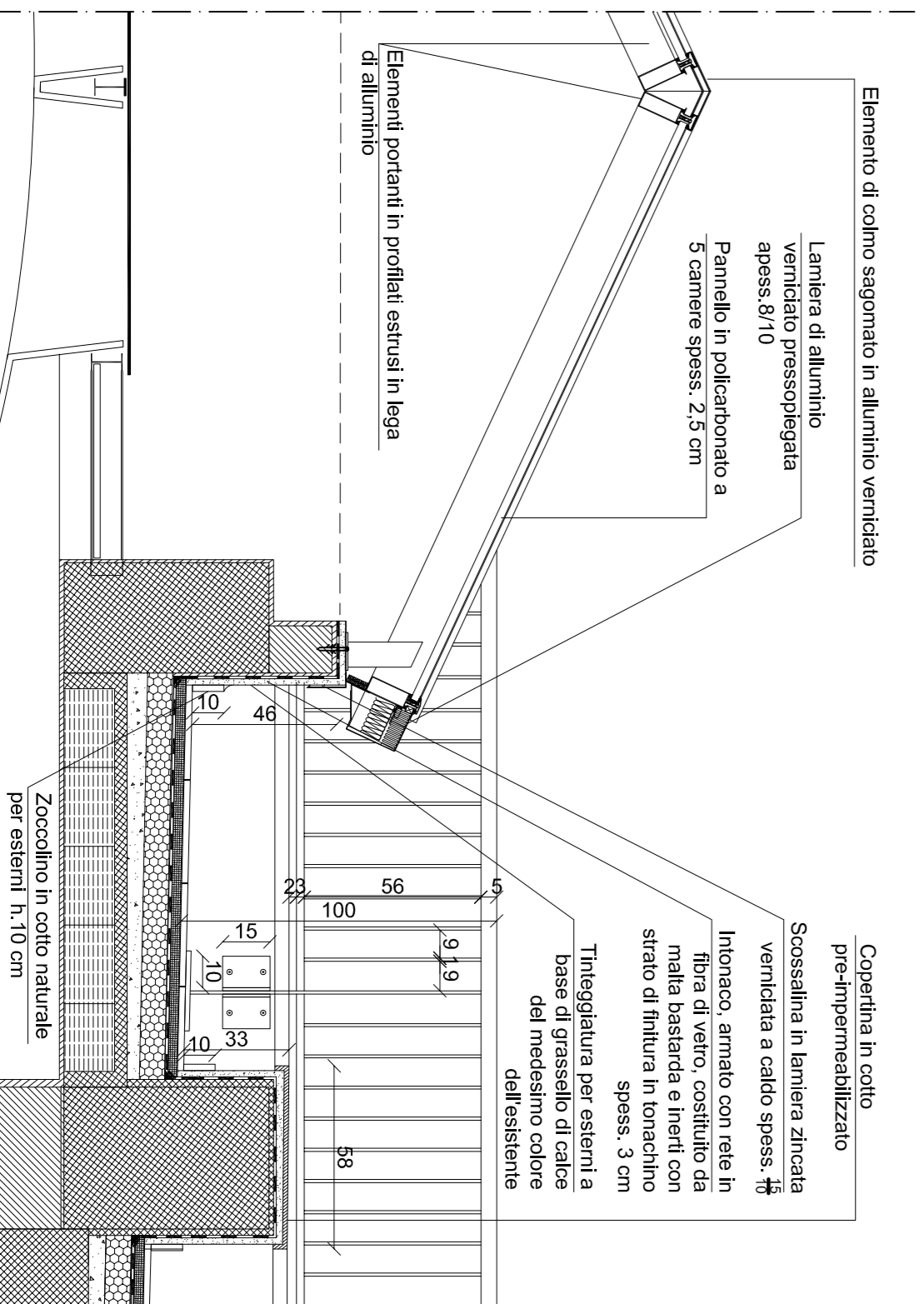
scala 1:10

SEZIONE A-A'



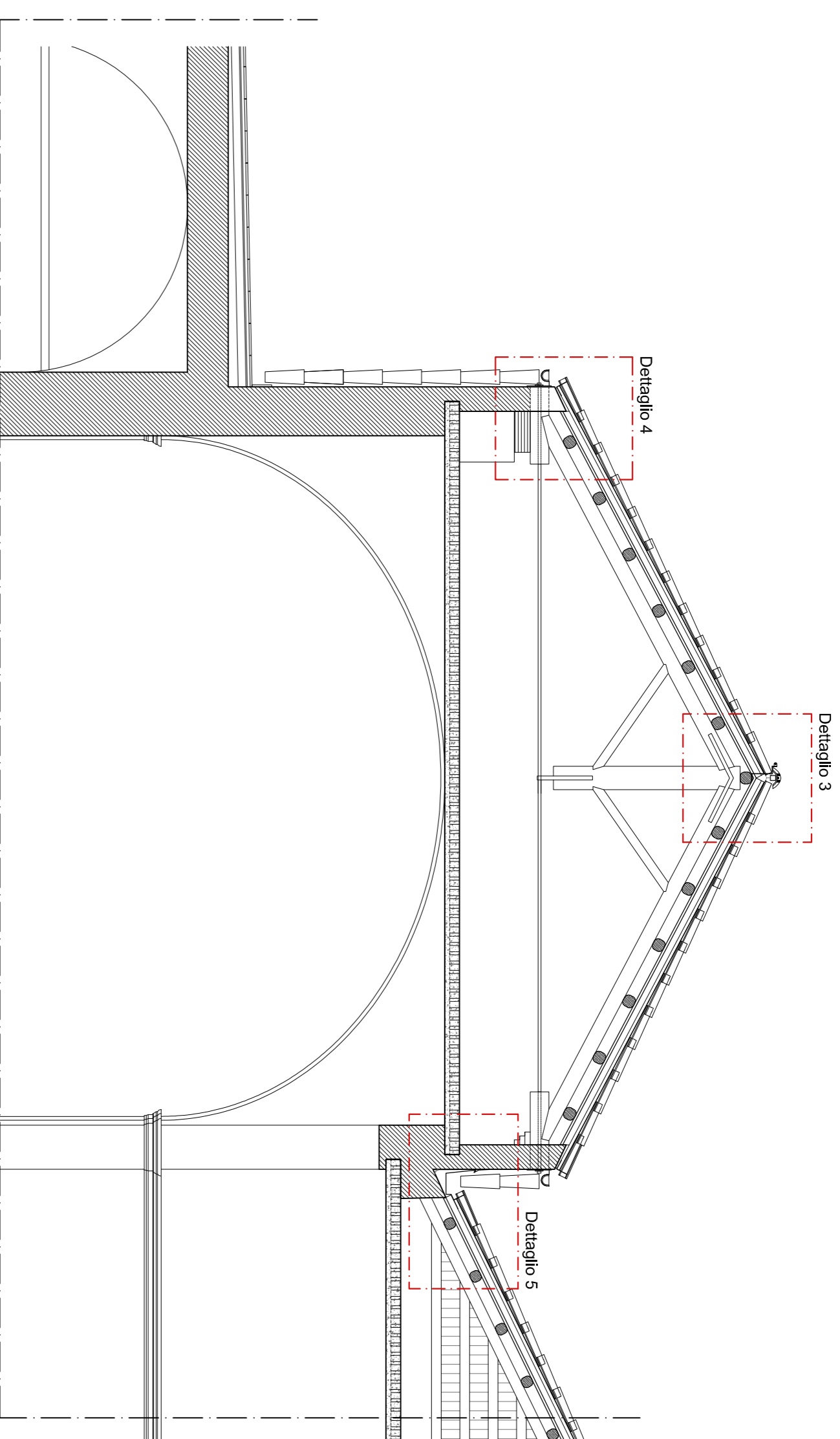
scala 1:50

DETTAGLIO 2



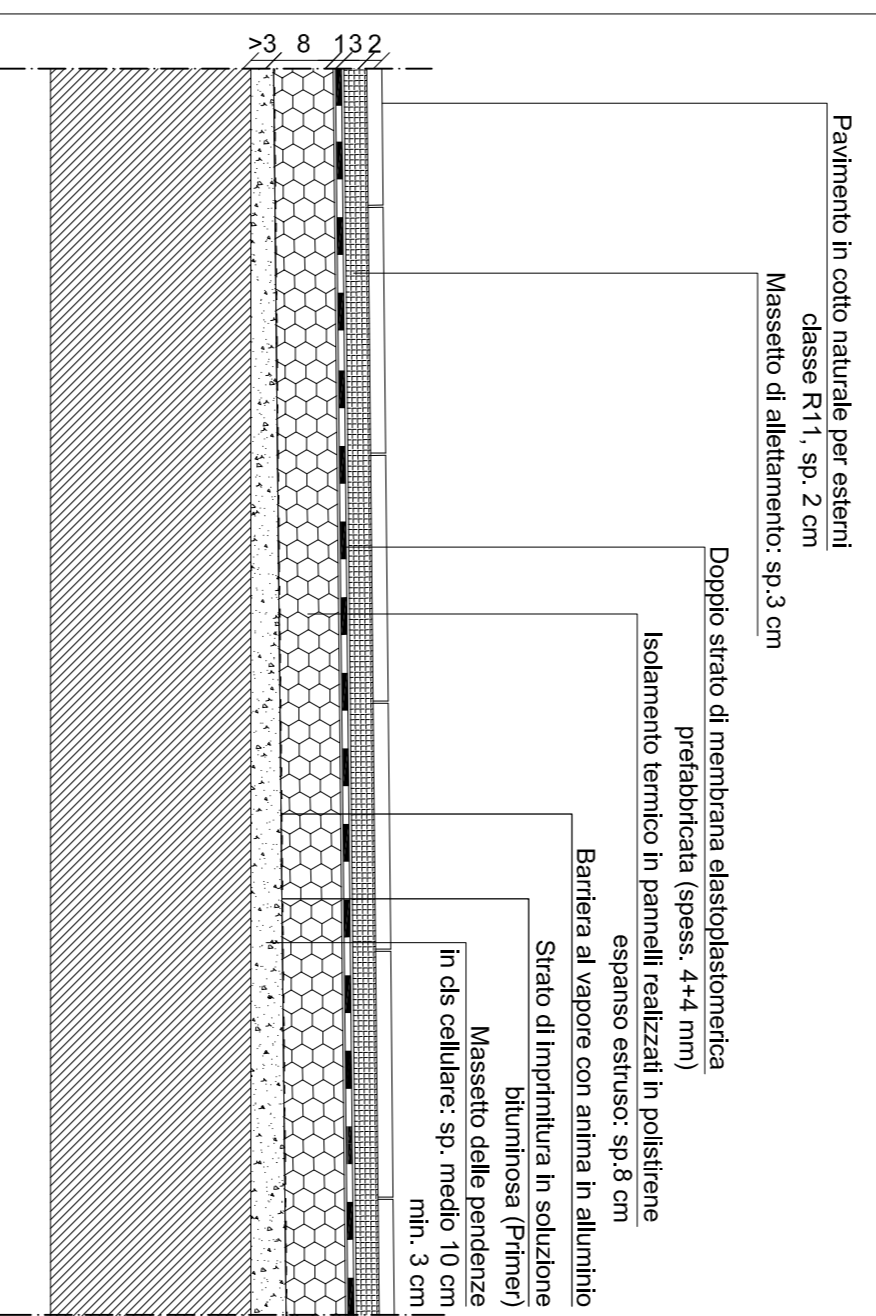
scala 1:20

SEZIONE B-B'



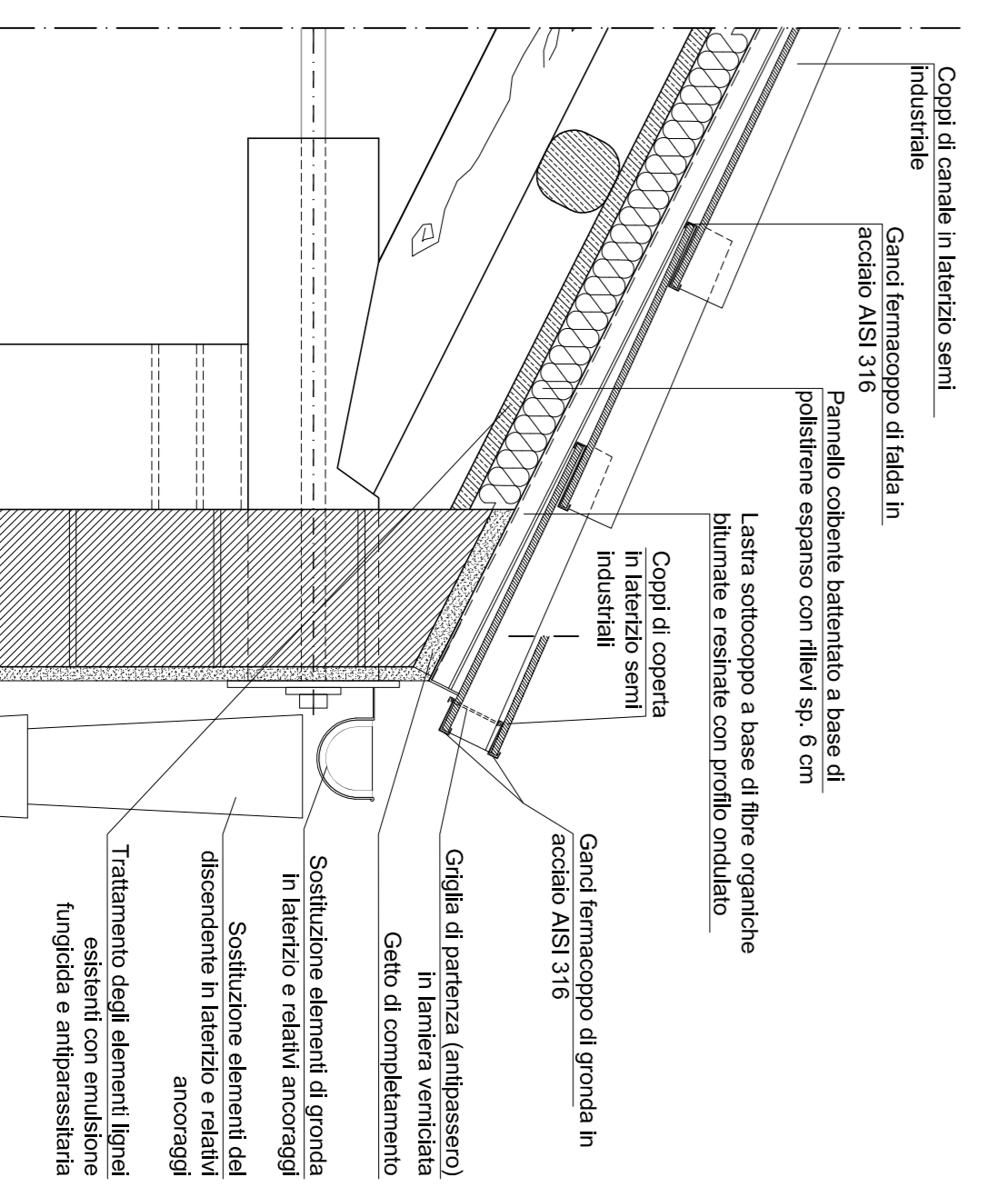
scala 1:50

DETTAGLIO Copertura piana



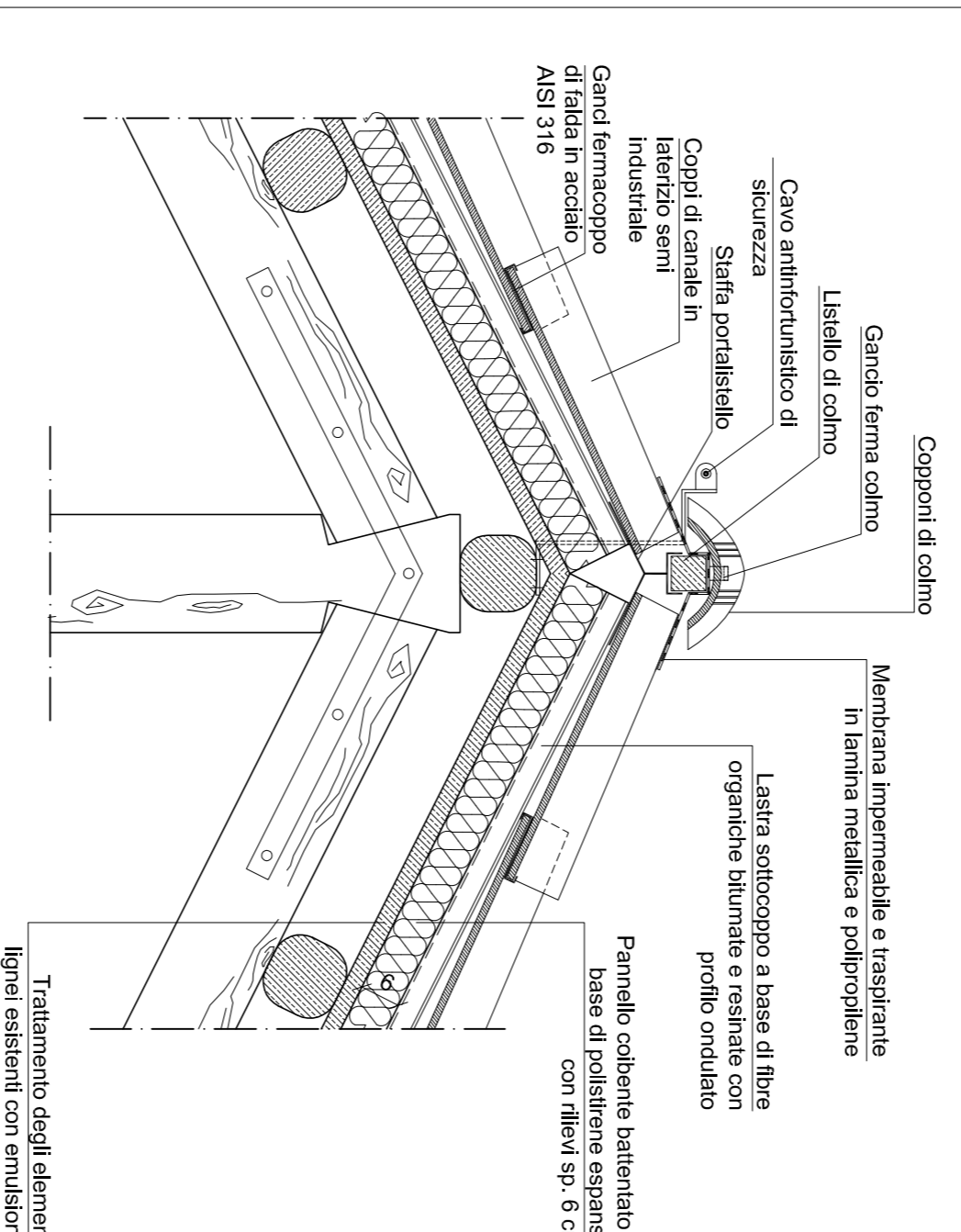
scala 1:10

DETTAGLIO 4



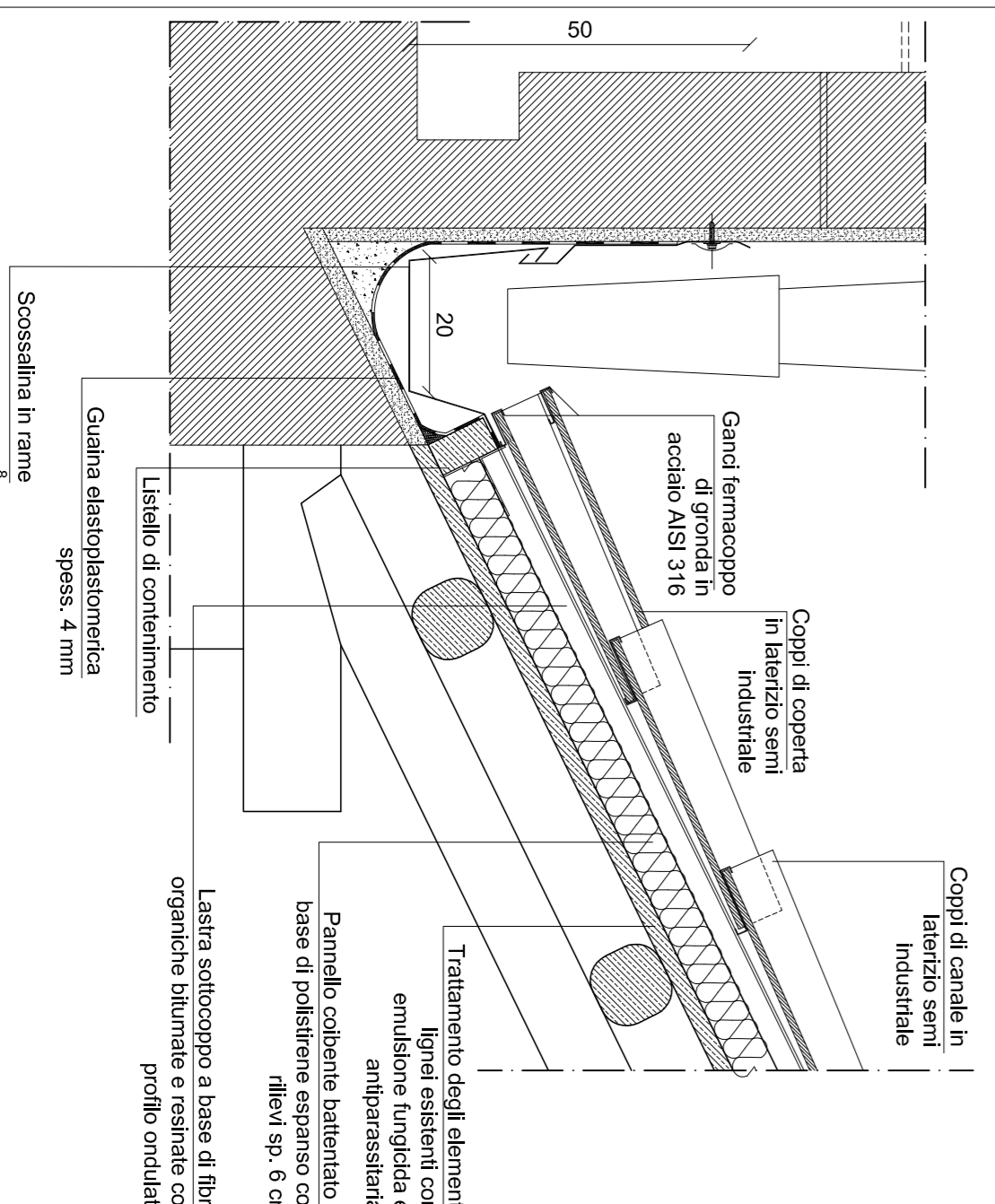
scala 1:10

DETTAGLIO 3

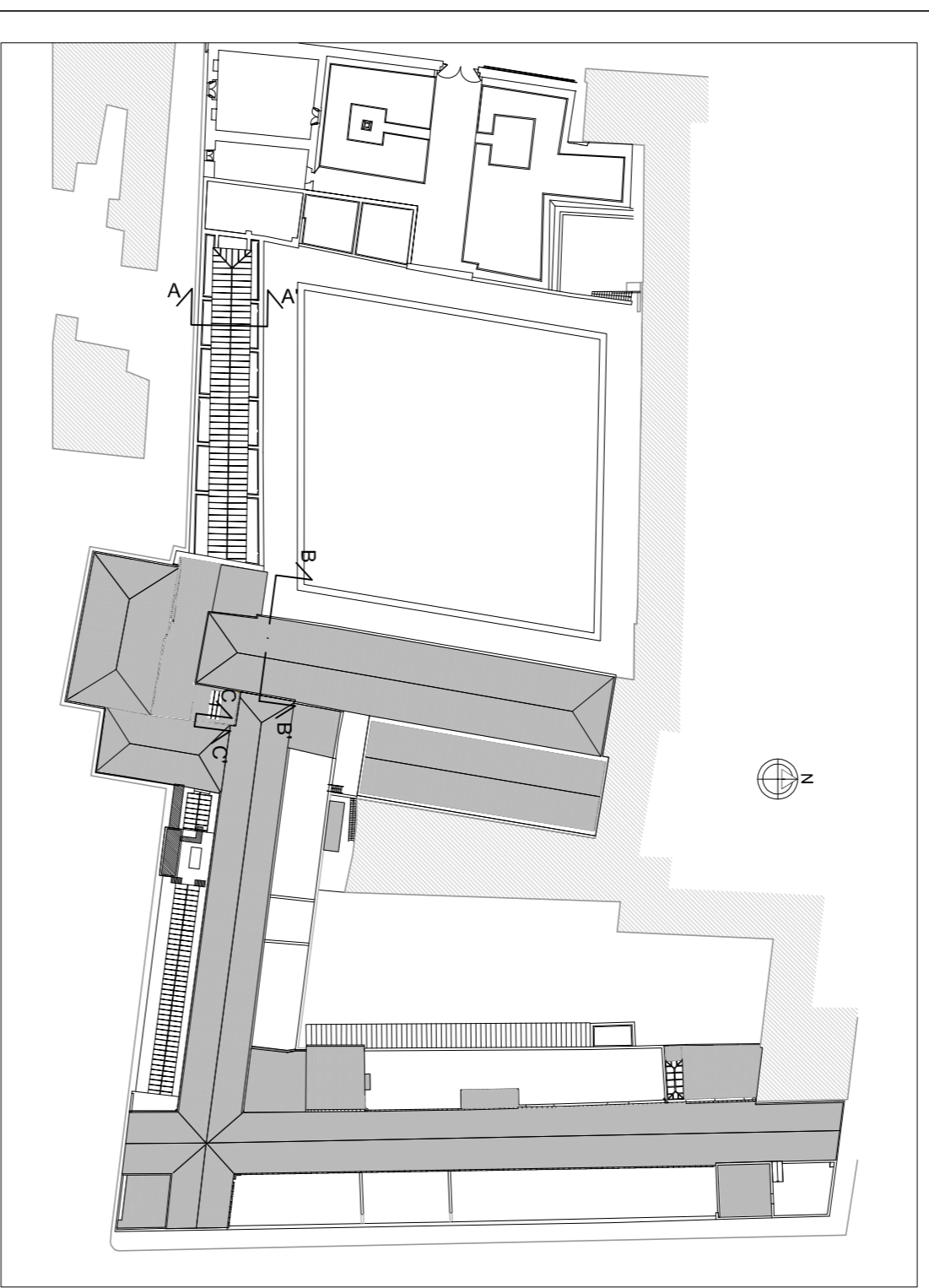


scala 1:10

DETTAGLIO 5



scala 1:10



MINISTERO PER I BENI E LE ATTIVITA' CULTURALI E DEL TURISMO
REGIONE SICILIANA
ASSESSORATO DEI BENI CULTURALI E DELL' IDENTITA' SICILIANA
DIPARTIMENTO DEI BENI CULTURALI E DELL' IDENTITA' SICILIANA
PROGETTO POLI MUSEALI D'ECCELLENZA NEL MEZZOGIORNO
POLO MUSEALE DI TRAPANI

PROGETTO DELLE OPERE DI VALORIZZAZIONE DEL POLO MUSEALE DI TRAPANI
MUSEO REGIONALE INTERDISCIPLINARE "CONTE AGOSTINO PEPOLI"

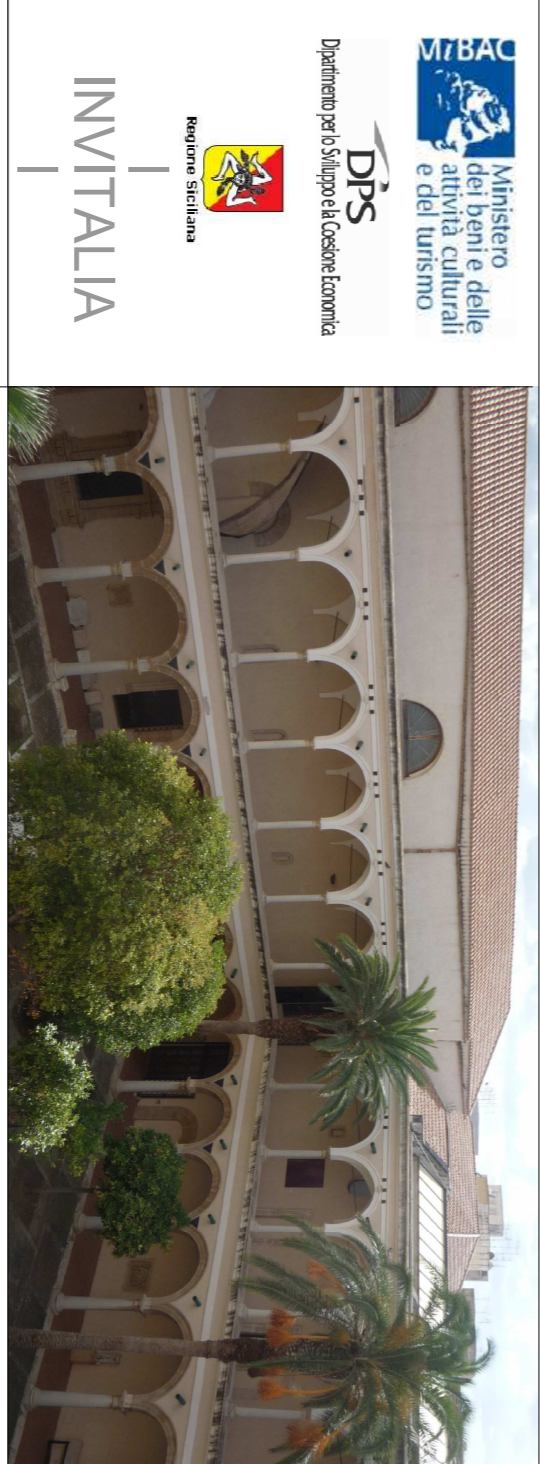


Table with project information including client (MIBAC), architect (INVITALIA), and project details.