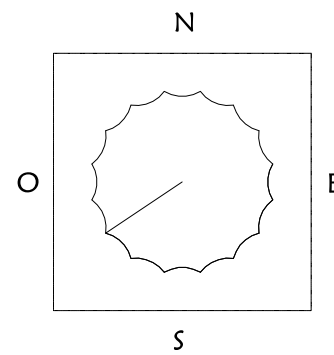
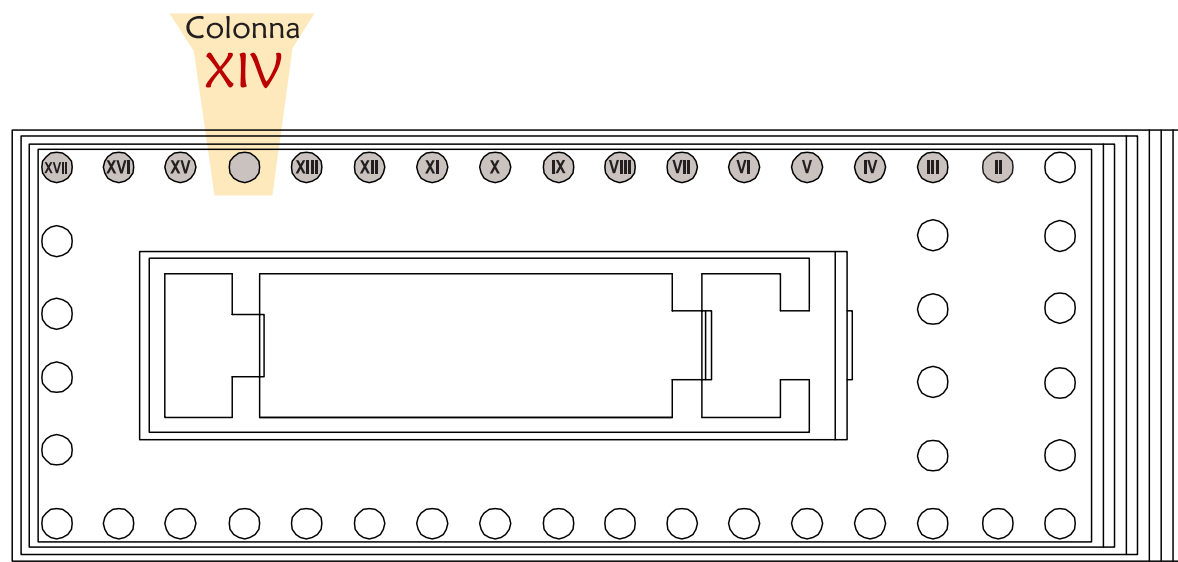
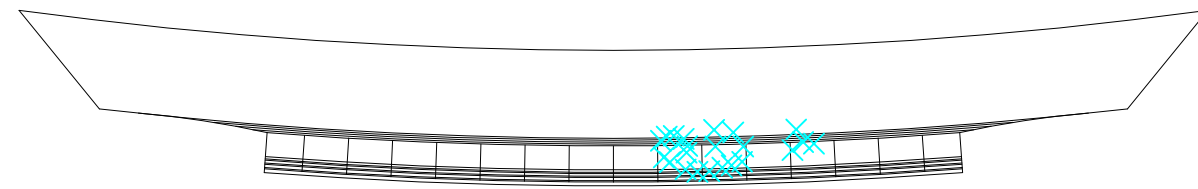
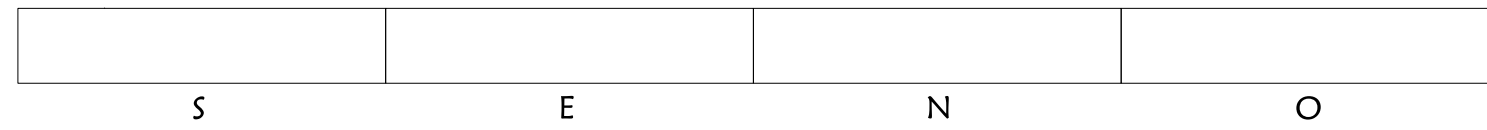


# ARCHITETTURA DORICA NELL'OCCIDENTE GRECO: Interventi pilota di restauro nei templi C ed E di Selinunte

Mappatura dei materiali tempio "C"

Colonna "XIV"



LEGENDA

- Calcarenite
- Laterizio
- Malte integrazione
- Barre metalliche
- Tracce di intonaco

